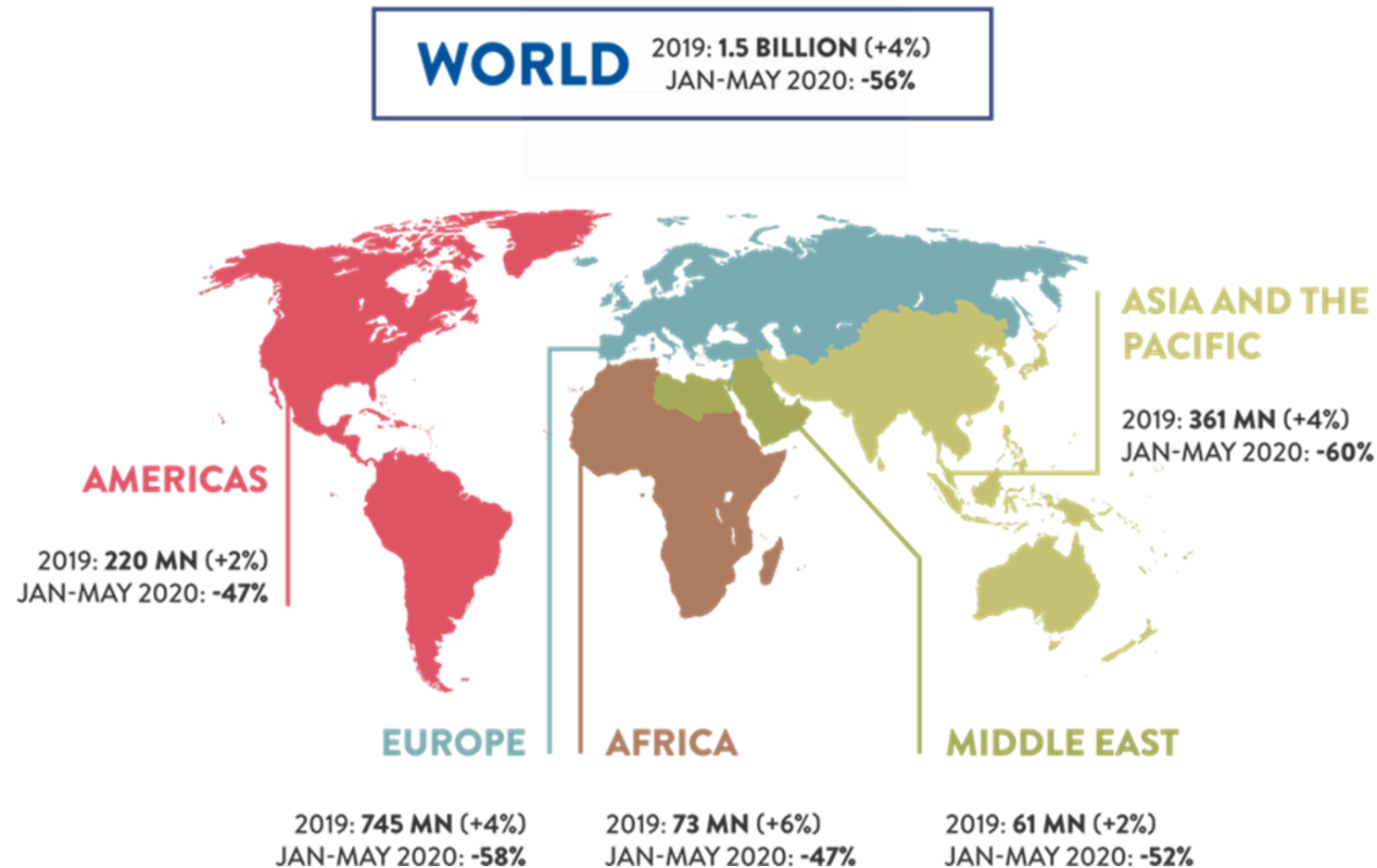


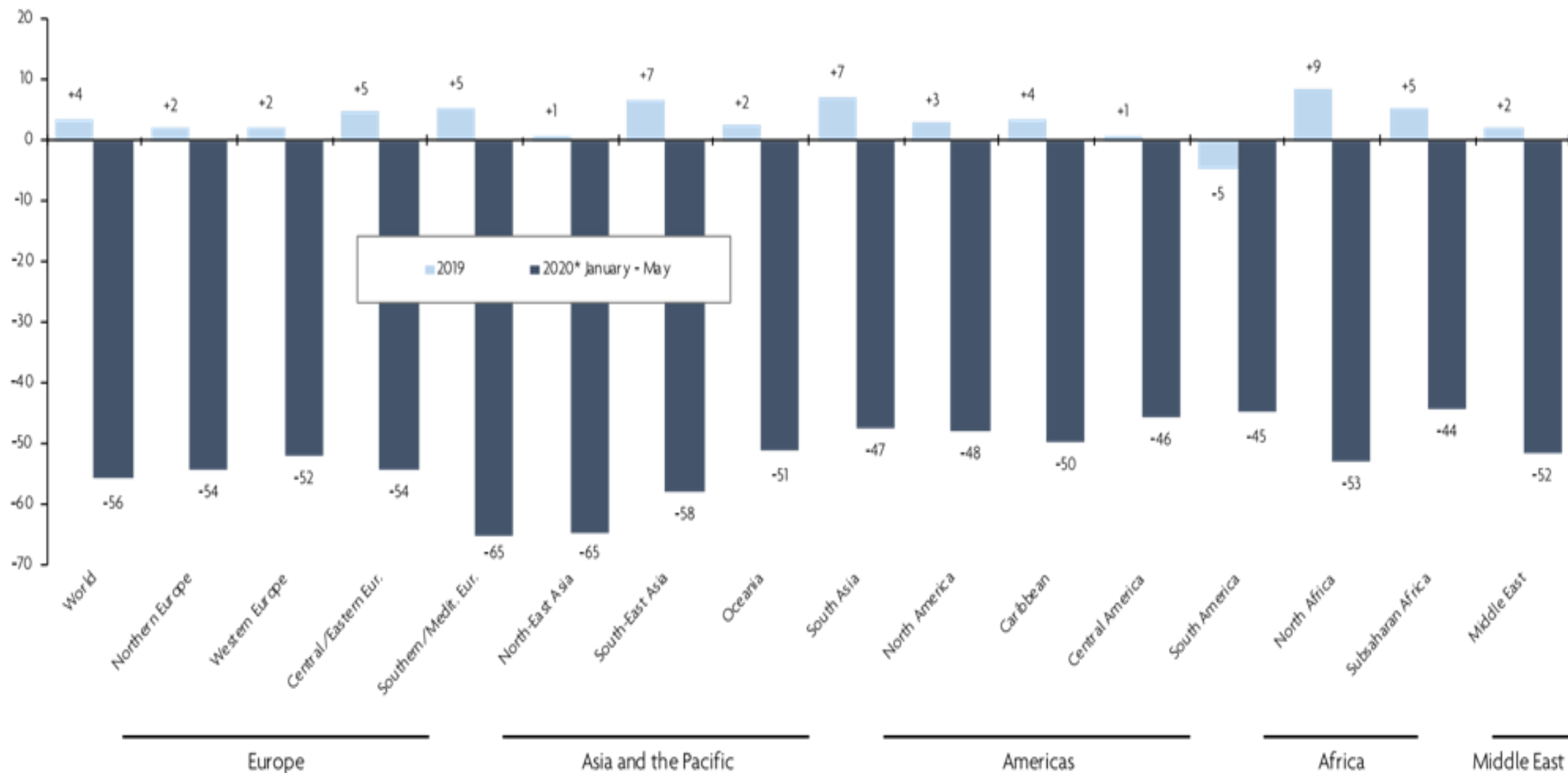
INTERNATIONAL TOURIST ARRIVALS JANUARY-MAY 2020

With 56% less international travellers US\$ 320 billion were lost in exports from tourism in five months
– over 3Xs what was lost in the 2009 economic crisis



International Tourist Arrivals

(% change over same period of the previous year)



WHAT IS AT STAKE?



100 to 120 MILLION
direct tourism **jobs at risk**
(UNWTO)



Loss of
US\$ 910 BILLION to US\$ 1.2 TRILLION
in exports from tourism –
international visitors' spending
(UNWTO)



Loss of
1.5% to 2.8% OF GLOBAL GDP
(UNCTAD)



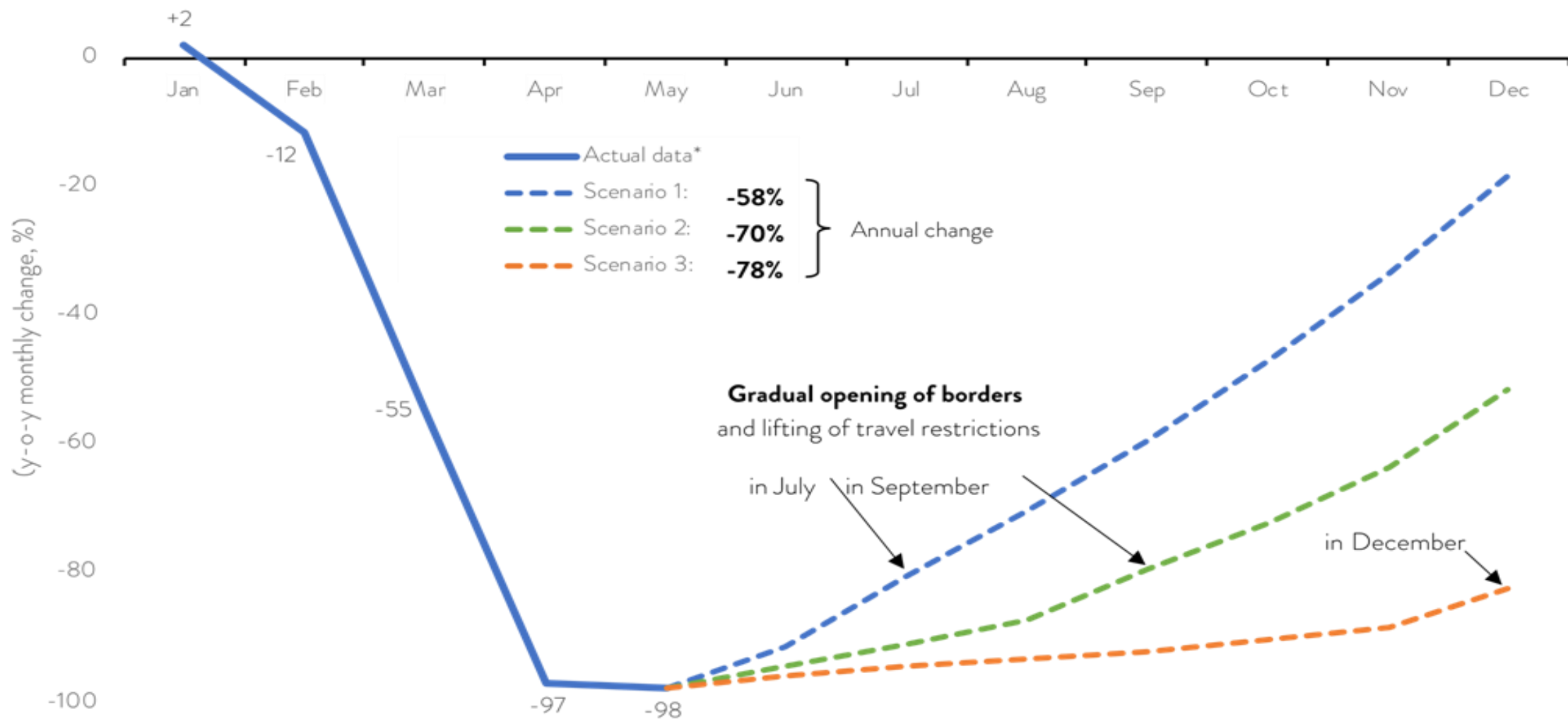
A lifeline for
SIDS, LDCs and many
AFRICAN COUNTRIES
tourism represents over 30% of exports
for the majority of SIDS and 80% for some
(UNWTO)



Critical

RECOVERY TO BE GRADUAL

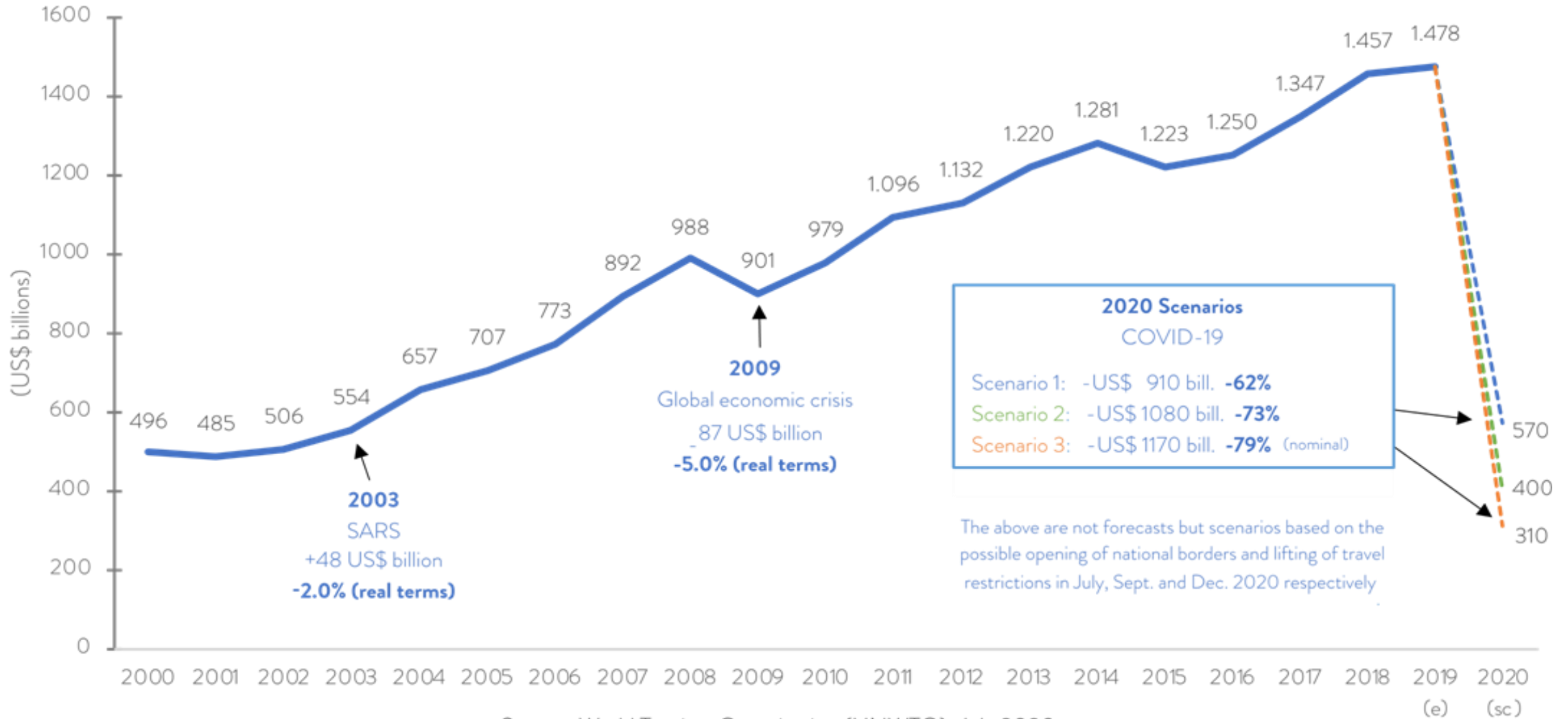
International tourist arrivals in 2020: three scenarios (y-o-y monthly change, %)



* Actual data through May includes estimates for countries which have not yet reported data. Source: World Tourism Organization (UNWTO), July 2020

INTERNATIONAL TOURISM RISKS RETURNING TO LEVELS OF 20 YEARS AGO

International tourism receipts, 2000-2019 and scenarios for 2020 (US\$ Billions)



(e) Estimate (sc) Scenario-based

Source: World Tourism Organization (UNWTO), July 2020